

Figure 1. An example of a Cusum chart showing the cumulative mortality for a single fictitious surgeon.

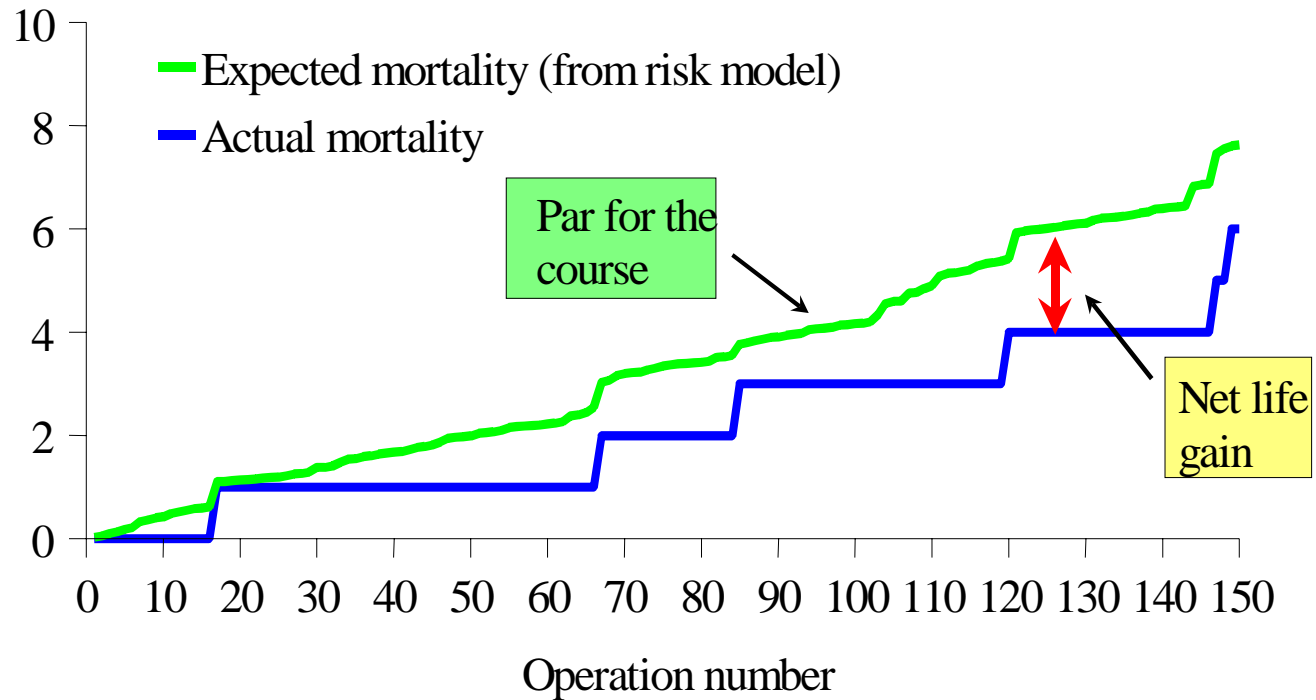


Figure 2. Comparison between actual cumulative mortality and what would be predicted using estimates of pre-operative risk for each patient (fictitious data).

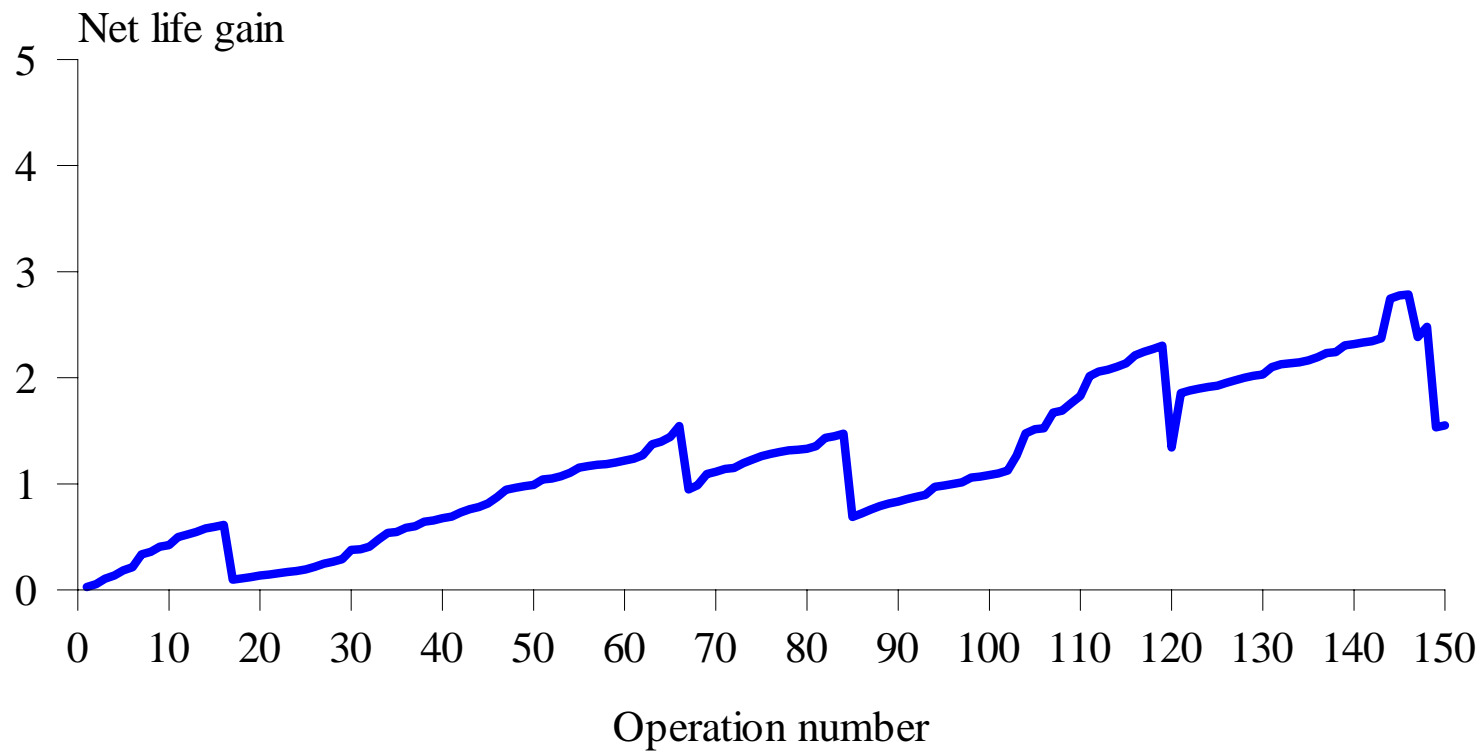


Figure 3. Illustrative plot of 'net life gain' for a fictitious surgeon (a VLAD plot)

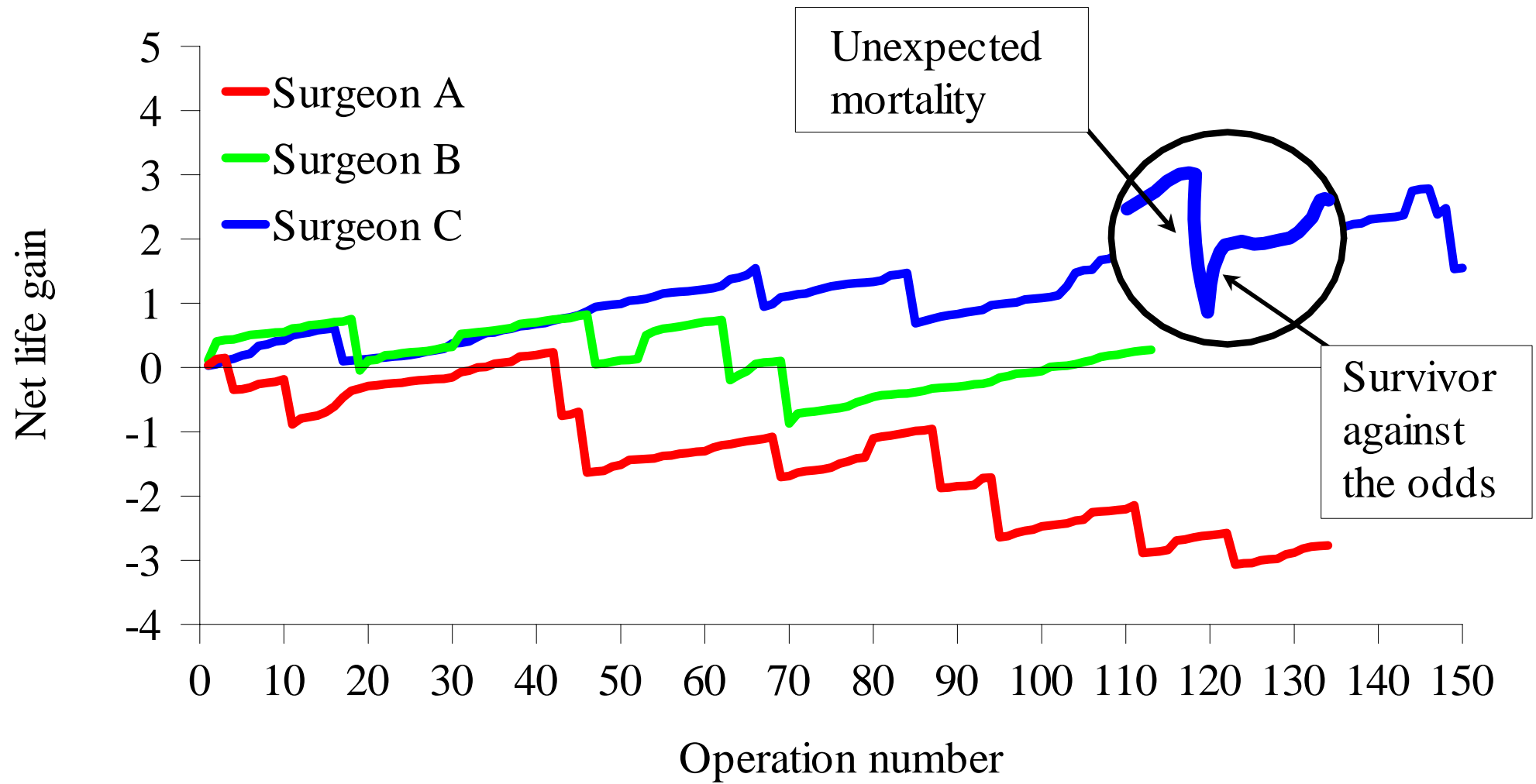


Figure 4. An illustration of VLAD plots for comparing peri-operative mortality rates for different (fictitious) surgeons

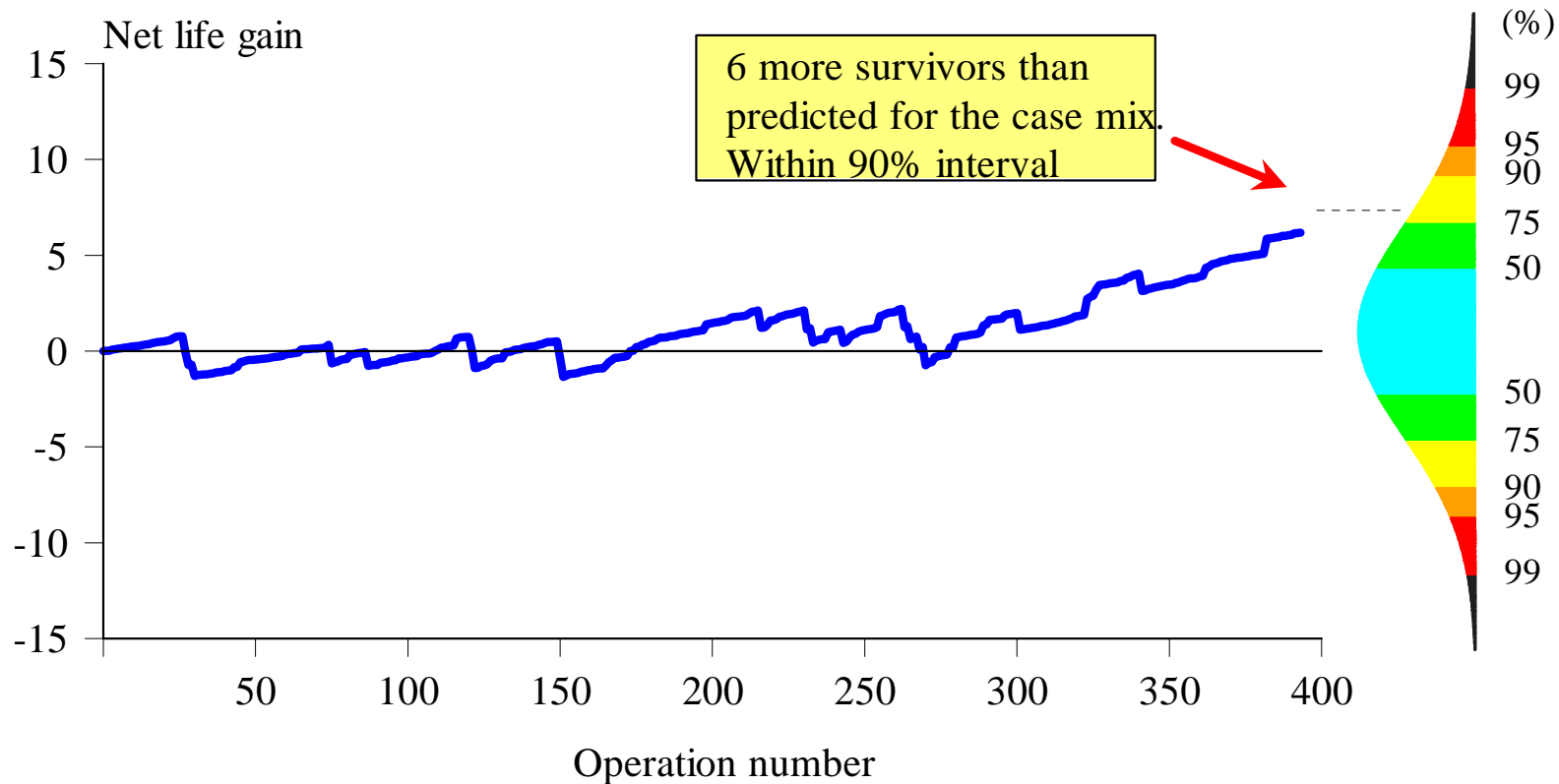


Figure 5. A VLAD plot for successive adult cardiac operations by a single surgeon indicating probability that departure from norm would be expected as a chance occurrence.

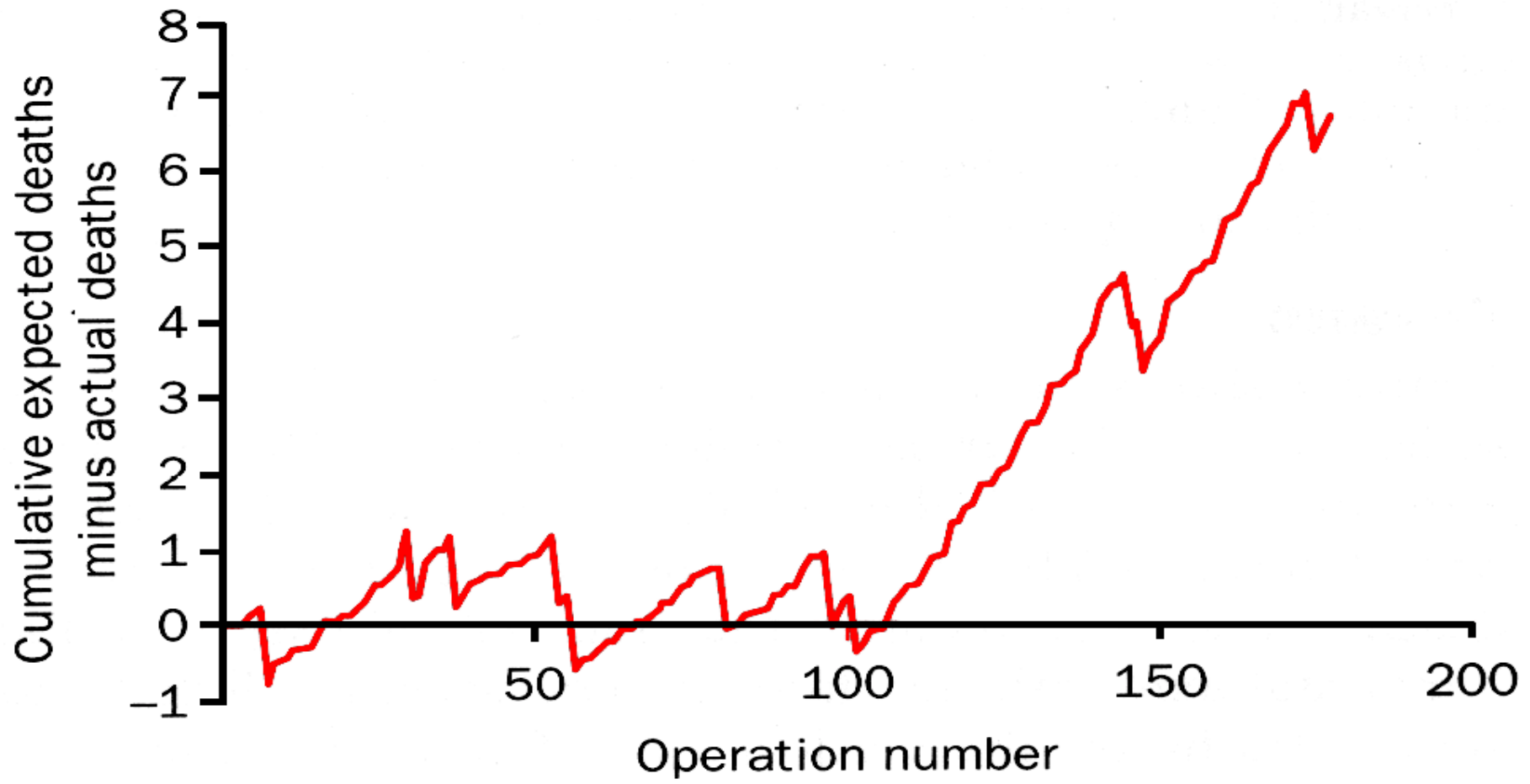


Figure 6 A VLAD plot for a surgeon in training.

Net life gain

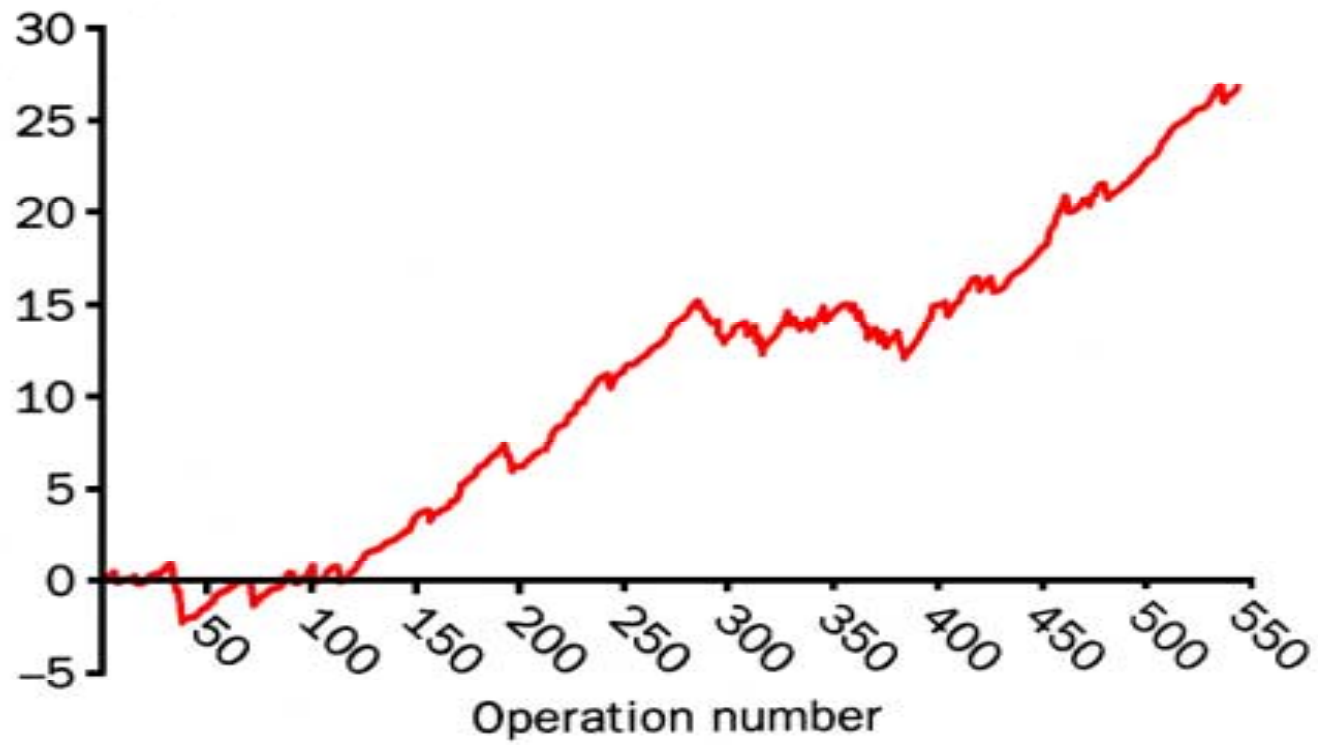


Figure 7 A VLAD plot for an experienced surgeon displaying data for a longer sequence of operations.