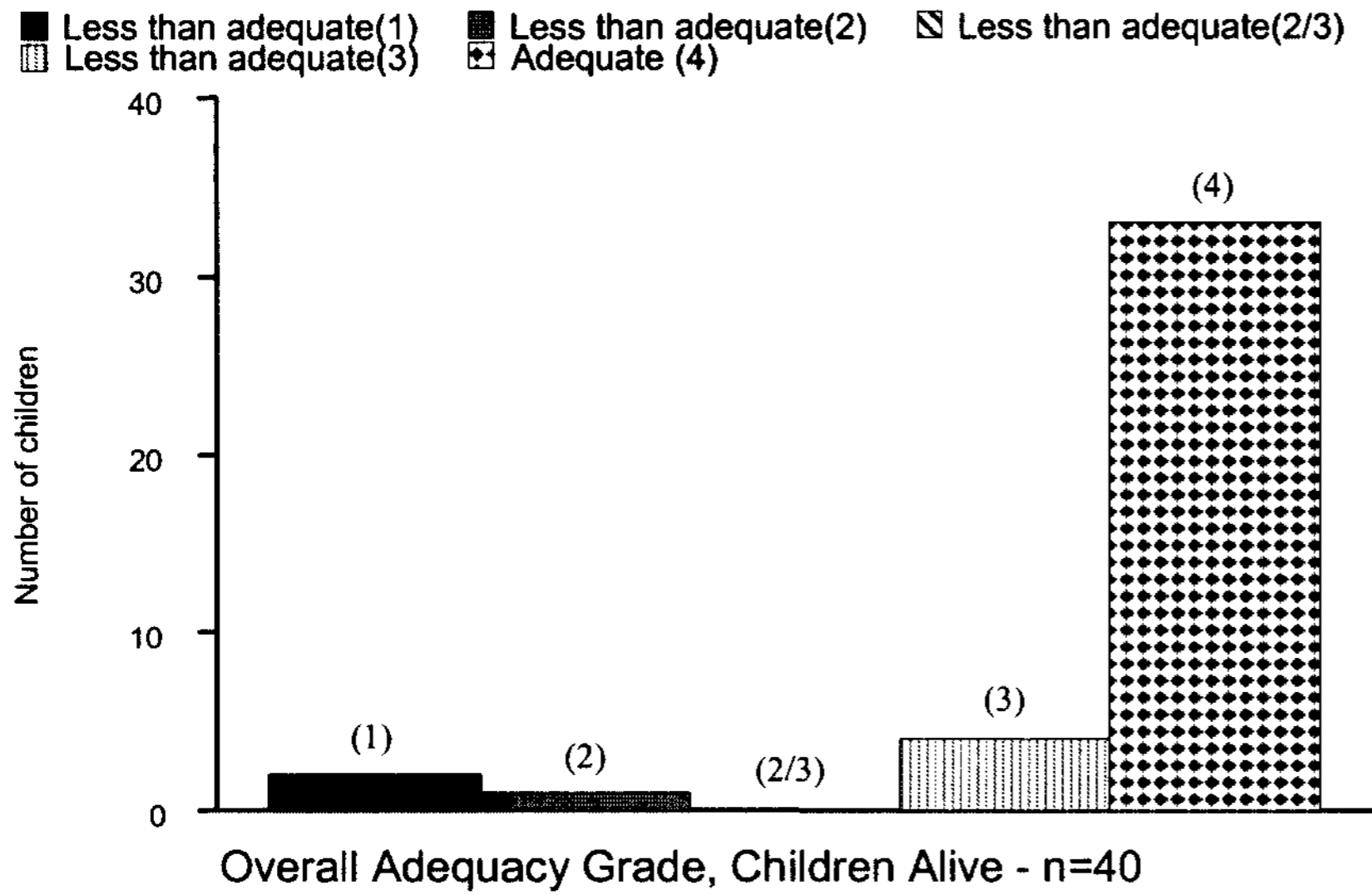


2.5 The following four graphs are self explanatory and provide an overall summary of the results of the review of 80 cases, according to the main features (operation type/outcome) of each case.

Figure 4
Distribution of overall adequacy grades, separately for those alive 30 days after their last operation and those who died within 30 days of their last operation. Numbers of children shown for each adequacy grade in that category of vital status.

a) Those alive at 30 days



b) Those who died within 30 days of their last operation

